

ORDERING INFORMATION

SFA25□□

Series name
Input voltage type
Output load voltage(250V/AC)
Output load current (RMS)

- AC Input(Trigger), AC Output
- Input voltage(Trigger) 185~250V
- AC Load current 55A~170A
- Zero cross



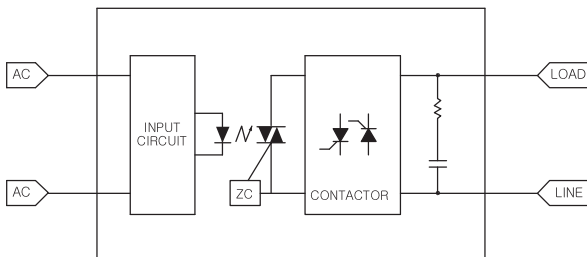
SFA25-SERIES SPECIFICATIONS

		SFA2555	SFA2585	SFA25110	SFA25140	SFA25170	UNIT
LOAD	Maximum load current LOAD	55	85	110	140	170	ARMS
	Load voltage	85V ~ 250V AC					V
	Surge on-state current (½cycle, 60Hz)	1300	1750	1950	2300	2550	A
	Maximum off-state leakage current	30 Max					mA
	Maximum on-state voltage drop	1.6					V
INPUT	Input voltage	185V ~ 250V AC					V
	Input impedance	14					kΩ
	Drop-out voltage	100					V

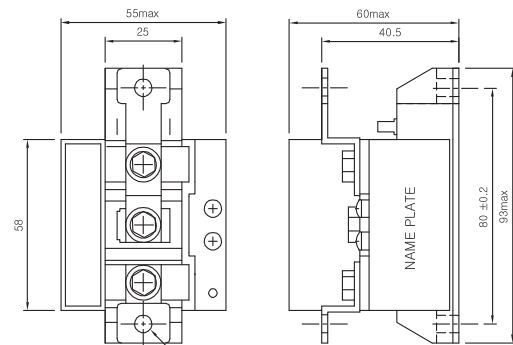
SFA25-SERIES CHARACTERISTICS

	SFA2555	SFA2585	SFA25110	SFA25140	SFA25170	UNIT
Operate time, max.	(½ cycle of voltage sine wave)+1 msec					mS
Release time, max.	(½ cycle of voltage sine wave)+1 msec					mS
Insulation resistance, min.	DC 500V 100MΩ between input, output and case					MΩ
Insulation voltage	2,500Vrms between input, output and case					V
Ambient temperature	-30°C ~ +80°C					°C
Storage temperature	-30°C ~ +80°C					°C
Operational method	Zero-cross (Turn-on and Turn-off)					

SIMPLIFIED CIRCUIT



DIMENSION



* Tolerance : ±1
* Dimensions in mm
2-φ6.0 MOUNTING HOLE