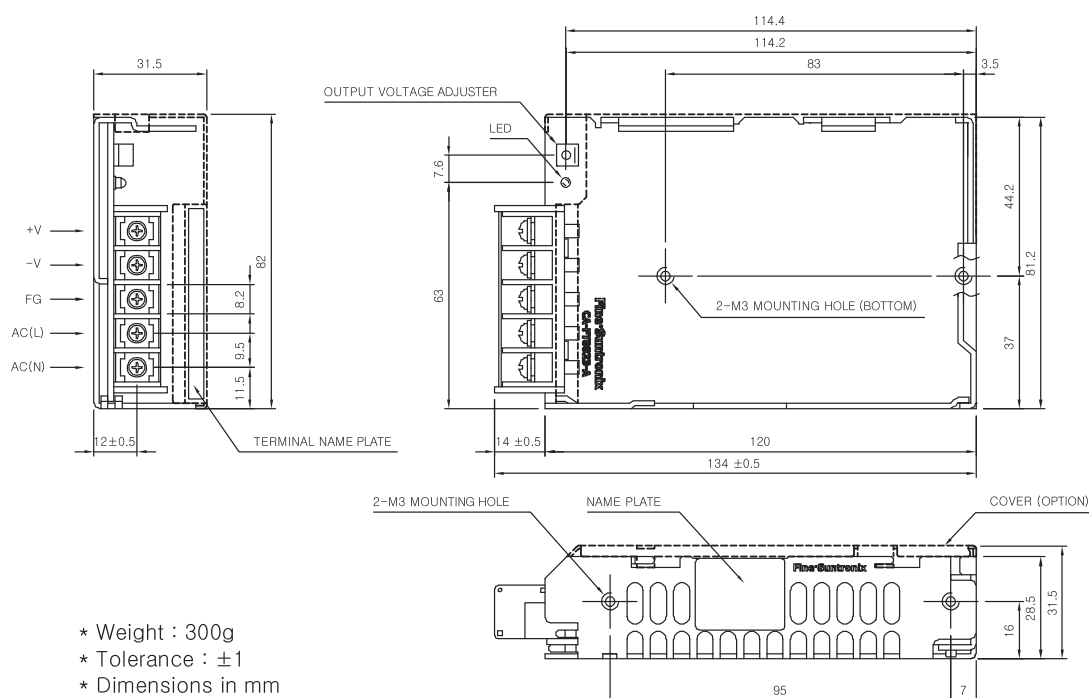


CSF50-S SPECIFICATIONS



MODEL		CSF50-3R3	CSF50-05	CSF50-09	CSF50-12	CSF50-15	CSF50-24	CSF50-48	
INPUT	VOLTAGE, FREQUENCY	AC100-240V (AC85 ~ 264V or DC120 ~ 370V), 50/60Hz (47 ~ 440Hz) Universal Input							
	CURRENT [A]	110V	0.7 (I _o =100%)						0.9 (I _o =100%)
		220V	0.4 (I _o =100%)						0.6 (I _o =100%)
	EFFICIENCY [%]	110V	70 typ	70 typ	76 typ	78 typ	78 typ	78 typ	79 typ
220V		70 typ	70 typ	75 typ	75 typ	75 typ	75 typ	75 typ	
INRUSH CURRENT		20A typ(AC IN 110V, I _o =100%), 40A typ(AC IN 220V, I _o =100%) at cold start.							
OUTPUT	VOLTAGE [V]	3.3	5	9	12	15	24	48	
	CURRENT [A]	10	10	5.6	4.3	3.5	2.2	1.1	
	REGULATION, LINE [mV]	25 Max	25 Max	45 Max	60 Max	75 Max	120 Max	240 Max	
	REGULATION, LOAD [mV]	50 Max	50 Max	90 Max	120 Max	150 Max	240 Max	480 Max	
	RIPPLE [mVp-p]	80 Max	80 Max	120 Max	120 Max	120 Max	120 Max	150 Max	
	RIPPLE, NOISE [mVp-p]	120 Max	120 Max	150 Max	150 Max	150 Max	150 Max	250 Max	
	TEMPERATURE DRIFT 0~+50°C [mV]	50 Max	75 Max	135 Max	180 Max	225 Max	360 Max	720 Max	
	RISE TIME [ms]	500 Max (AC IN 100V, I _o =100%)							
	HOLDING TIME [ms]	17 typ (AC IN 100V, I _o =100%)							
PROTECTION CIRCUIT	OVER CURRENT PROTECTION	Works at over 105% of rating and recovers automatically							
	OVER VOLTAGE PROTECTION	Works at 115 ~ 140% of rating							
ELECTRICALLY ISOLATED	INPUT-OUTPUT	AC 3,000V 1 minute current 20mA, DC 500V 100MΩ (At room temperature & Humidity)							
	INPUT-CASE, FG	AC 2,000V 1 minute current 20mA, DC 500V 100MΩ (At room temperature & Humidity)							
	OUTPUT-CASE, FG	AC 500V 1 minute current 100mA, DC 500V 100MΩ (At room temperature & Humidity)							
ENVIRONMENT	OPERATING TEMP AND HUMID	-10 ~ +70°C(Required Derating), 20 ~ 90% RH(Non Condensing)							
	STORAGE TEMP AND HUMID	-20 ~ +75°C, 20~90% RH(Non Condensing)							
	VIBRATION	10 ~ 55Hz at 1G, 3 minutes period, 30 minutes along X, Y and Z axis							
	IMPACT	10G for 20ms, once on each X, Y and Z axis							
SAFETY	SAFETY REGULATION	UL, C-UL, CE, CB							
	LINE CONDUCTED RF VOLTAGE	Built to meet EN55022-A							

CSF50-S EXTERNAL VIEW



- * Weight : 300g
- * Tolerance : ±1
- * Dimensions in mm

General Information
Switching Mode Power Supply
DC-DC Converter
Noise Filter
Solid State Relay
AC FAN Motor
Power Module
Discrete Semiconductors