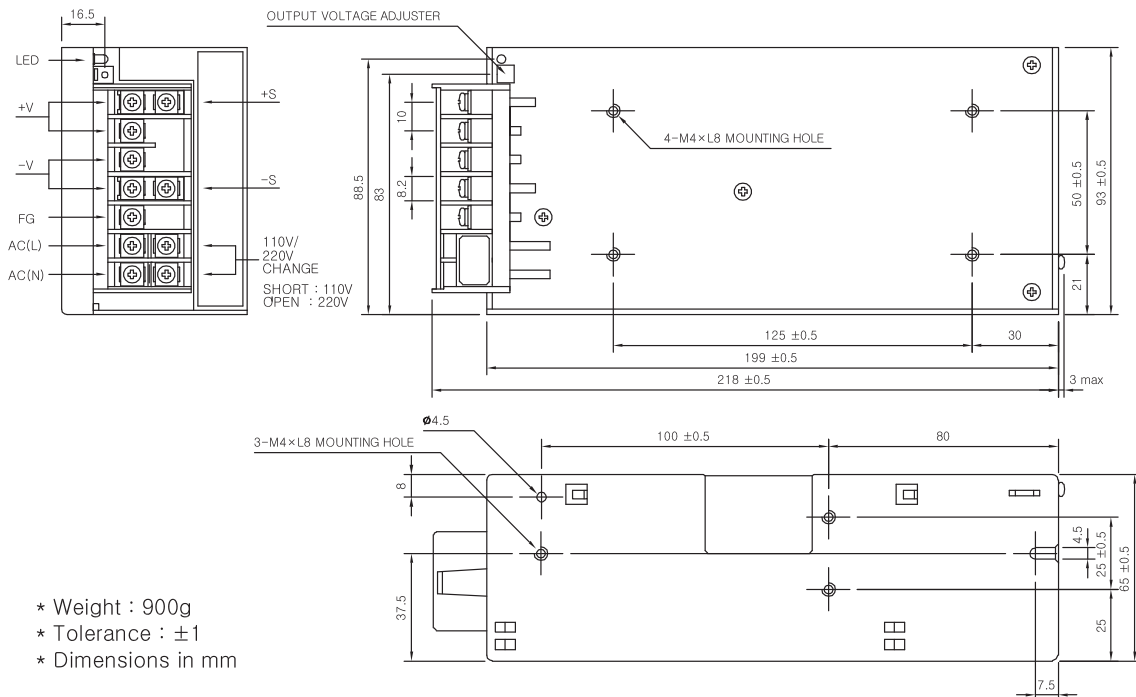


VSF150-S SPECIFICATIONS



MODEL		VSF150-05	VSF150-09	VSF150-12	VSF150-15	VSF150-24	VSF150-48
INPUT	VOLTAGE, FREQUENCY	AC100-120V / 200-240V (AC90 ~ 132V / 180 ~ 264V or DC240 ~ 370V), 50/60Hz (47~ 440Hz) User Selectable					
	CURRENT [A]	110V	3.7 (I <sub>o</sub> =100%)				
		220V	2.1 (I <sub>o</sub> =100%)				
	EFFICIENCY [%]	110V	78 typ	80 typ	80 typ	83 typ	85 typ
	220V						
INRUSH CURRENT		20A typ(AC IN 110V, I <sub>o</sub> =100%), 40A typ(AC IN 220V, I <sub>o</sub> =100%) at cold start.					
OUTPUT	VOLTAGE [V]	5	9	12	15	24	48
	CURRENT [A]	30	17	13	10	6.5	3.1
	REGULATION, LINE [mV]	25 Max	45 Max	60 Max	75 Max	120 Max	240 Max
	REGULATION, LOAD [mV]	50 Max	90 Max	120 Max	150 Max	240 Max	480 Max
	RIPPLE [mVp-p]	50 Max	90 Max	120 Max	150 Max	240 Max	480 Max
	RIPPLE, NOISE [mVp-p]	100 Max	140 Max	170 Max	200 Max	290 Max	530 Max
	TEMPERATURE DRIFT -10~+50°C [mV]	75 Max	135 Max	180 Max	225 Max	360 Max	720 Max
	RISE TIME [ms]	500 Max (AC IN 110V / 220V I <sub>o</sub> =100%)					
	HOLDING TIME [ms]	16 typ (AC IN 110V/220V, I <sub>o</sub> =100%)					
PROTECTION CIRCUIT	OVER CURRENT PROTECTION	Works at over 110% of rating and recovers automatically					
	OVER VOLTAGE PROTECTION	Works at 115 ~ 140% of rating					
ELECTRICALLY ISOLATED	INPUT-OUTPUT	AC 3,000V 1 minute current 20mA, DC 500V 100MΩ (At room temperature & Humidity)					
	INPUT-CASE, FG	AC 2,000V 1 minute current 20mA, DC 500V 100MΩ (At room temperature & Humidity)					
	OUTPUT-CASE, FG	AC 500V 1 minute current 100mA, DC 500V 100MΩ (At room temperature & Humidity)					
ENVIRONMENT	OPERATING TEMP AND HUMID	-10 ~ +50°C, 20 ~ 90% RH(Non condensing)					
	STORAGE TEMP AND HUMID	-20 ~ +75°C, 20 ~ 90% RH(Non condensing)					
	VIBRATION	10 ~ 55Hz at 1G, 3 minutes period, 30 minutes along X, Y and Z axis					
	IMPACT	10G for 20ms once on each X, Y and Z axis					
SAFETY	SAFETY REGULATION	CE	-	CE	CE	CE	-
	LINE CONDUCTED RF VOLTAGE	-					

VSF150-S EXTERNAL VIEW



- \* Weight : 900g
- \* Tolerance : ±1
- \* Dimensions in mm